

# JOHANN JOSEPH FUX

(um 1660–1741)

Plaudite, sonat tuba

K 165

Motetto de Resurrectione Domini

Violino II

Edition: Ramona Hocker und Alexander Rausch  
nach Mus.Hs. 17380 der Österreichischen Nationalbibliothek, Wien

Fux concertato Nr. 1  
Institut für kunst- und musikhistorische Forschungen  
Österreichische Akademie der Wissenschaften  
2016

[www.fux-online.at](http://www.fux-online.at)

© CC-BY-NC 4.0 de

A large, stylized, black signature of Johann Joseph Fux, written in a cursive script. The signature is positioned at the bottom of the page, with the word 'CONCERTATO' printed in a serif font across it. The signature starts with a large, sweeping flourish that curves over the word 'CONCERTATO' and ends with a long, sweeping tail that curves under the word 'Fux'.

CONCERTATO

Fux

# Plaudite, sonat tuba (K 165)

Johann Joseph Fux

Allegro „Plaudite“ (T. 1–20) tacet

Recitativo  
Adagio Allegro

21 *pp*

28 **3** Adagio **5** Allegro

*p*

„Plaudite“ da Capo (tacet)

Aria  
Allegro assai

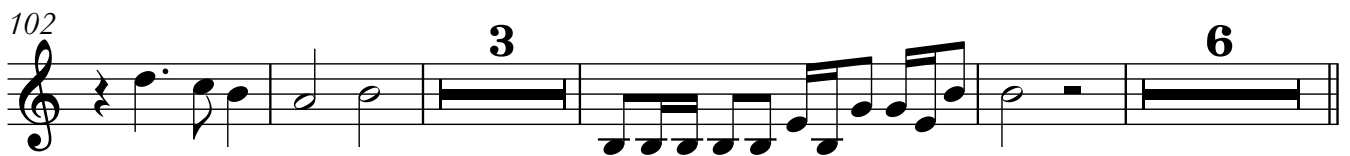
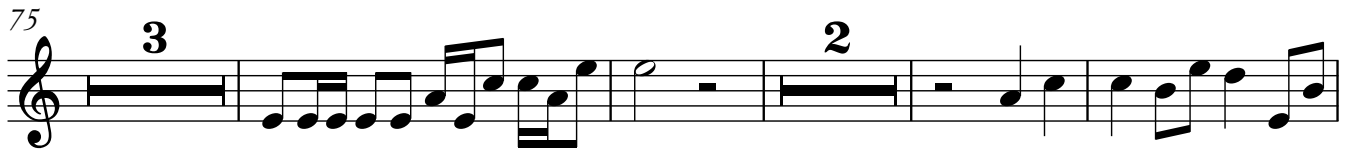
39

45 *p*

52 **2** *f*

59 **3**

68 **2**



Da Capo sino al segno ◡

Recitativo  
Adagio



Aria „O peccator“ (T. 134–204) tacet

## Allegro assai

Musical score for Violino II, measures 205-257. The score is in C major and 2/4 time. It features several triplet patterns and dynamic markings.

Measures 205-210: Measure 205 starts with a fermata and a '2' above the staff. Measures 206-210 contain triplet patterns.

Measures 211-216: Measures 211-216 continue the melodic line with various rhythmic values.

Measures 217-224: Measures 217-224 feature a series of rests followed by notes, with a '2' above the staff in measure 224.

Measures 225-232: Measures 225-232 contain triplet patterns and notes, with a '2' above the staff in measure 232.

Measures 233-240: Measures 233-240 feature triplet patterns and notes, with a '2' above the staff in measure 240.

Measures 241-244: Measures 241-244 contain triplet patterns and notes, with a 'tr' marking above the staff in measure 244.

Measures 245-250: Measures 245-250 continue the melodic line with various rhythmic values.

Measures 251-256: Measures 251-256 feature triplet patterns and notes, with a '3' above the staff in measure 251.

Measures 257-260: Measures 257-260 contain notes and rests, with a '2' above the staff in measure 260.

Da Capo sino al segno ◡