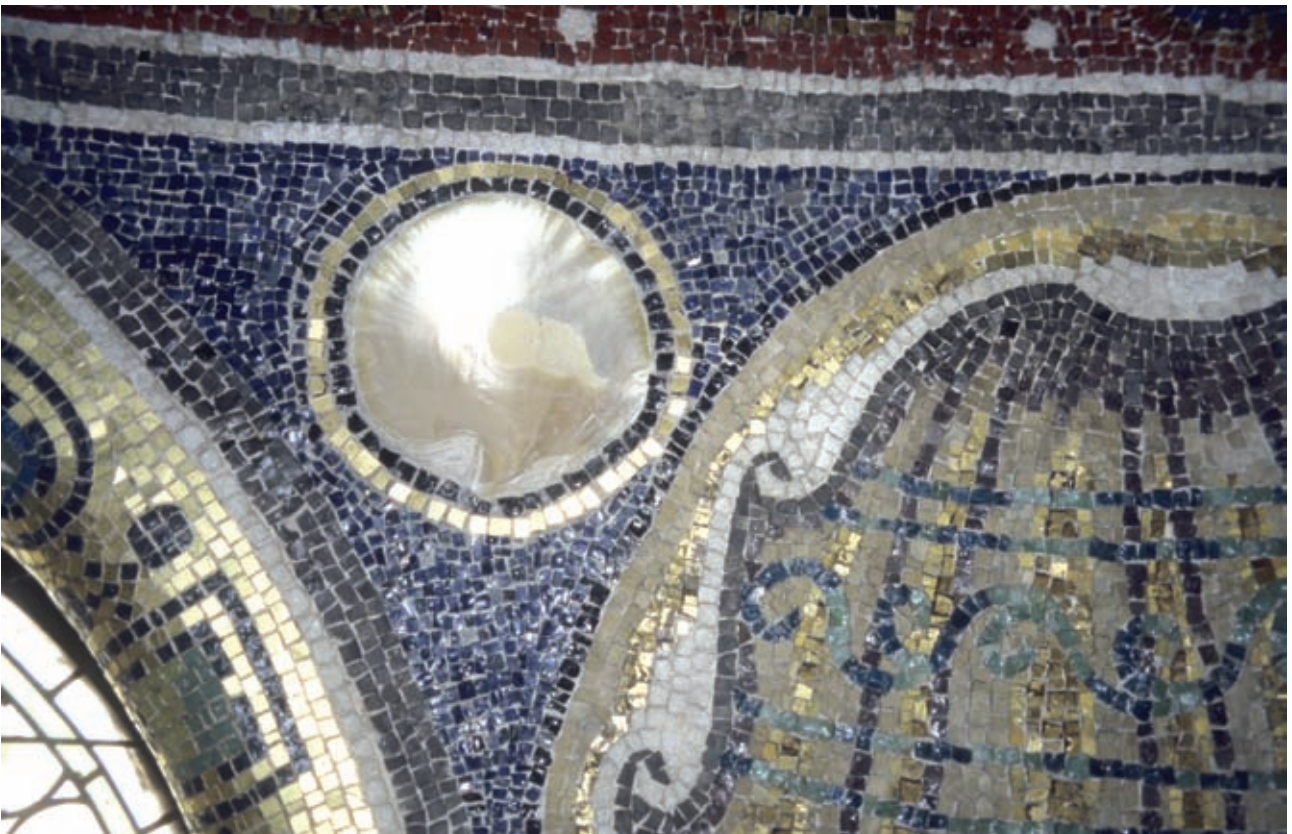


Abbildungen



Fig. 1: Kiti, Panagia Angeloktistos, apse mosaic. Border with fountains

Fig. 2: Poreč, Cathedral of Eufrasius, wall mosaics in the main apse. Real and fictive shells



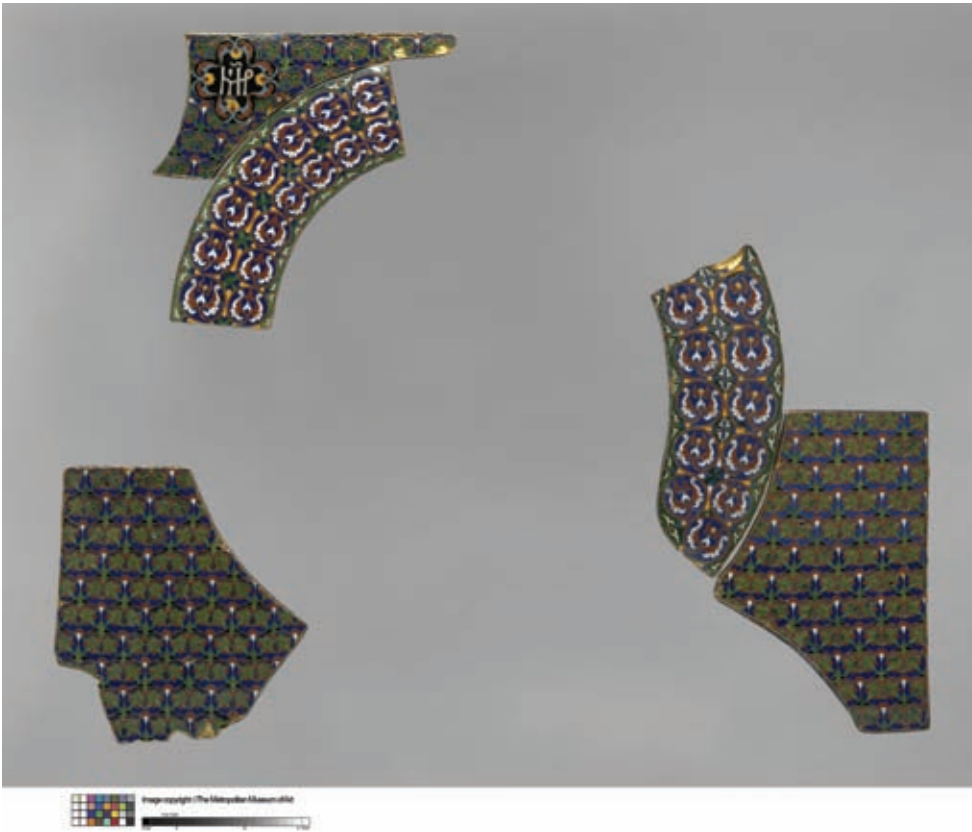


Fig. 3: New York, The Metropolitan Museum of Art. Enameled revetments from an icon of the Virgin

Fig. 4: Lagoudera, Panagia tou Arakos. Fresco of the Annunciation, detail, the Virgin's house





Fig. 5: Marko, St. Demetrius. Akathistos, stanza 4

