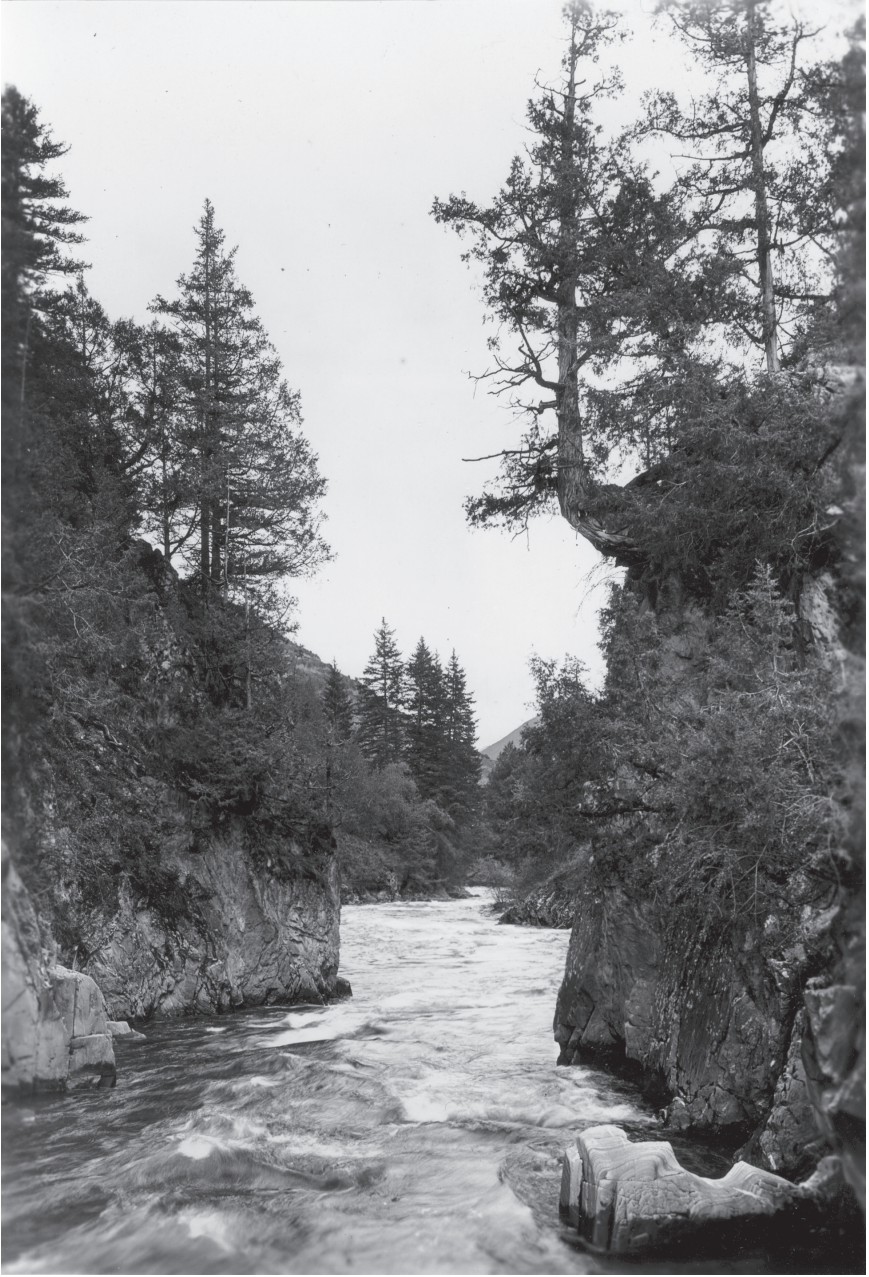


3 (p. 43)

*Malus toringoides* Hughes, forming groves in the T'ao River Valley near Shao-ni kou, Cho-ni elevation 8500 feet.



4 (p. 43)

*Juniperus distans* Florin growing on limestone rocks in a defile of the Lha-gya stream, K'a-cha kou (Valley), elevation 9000 feet.