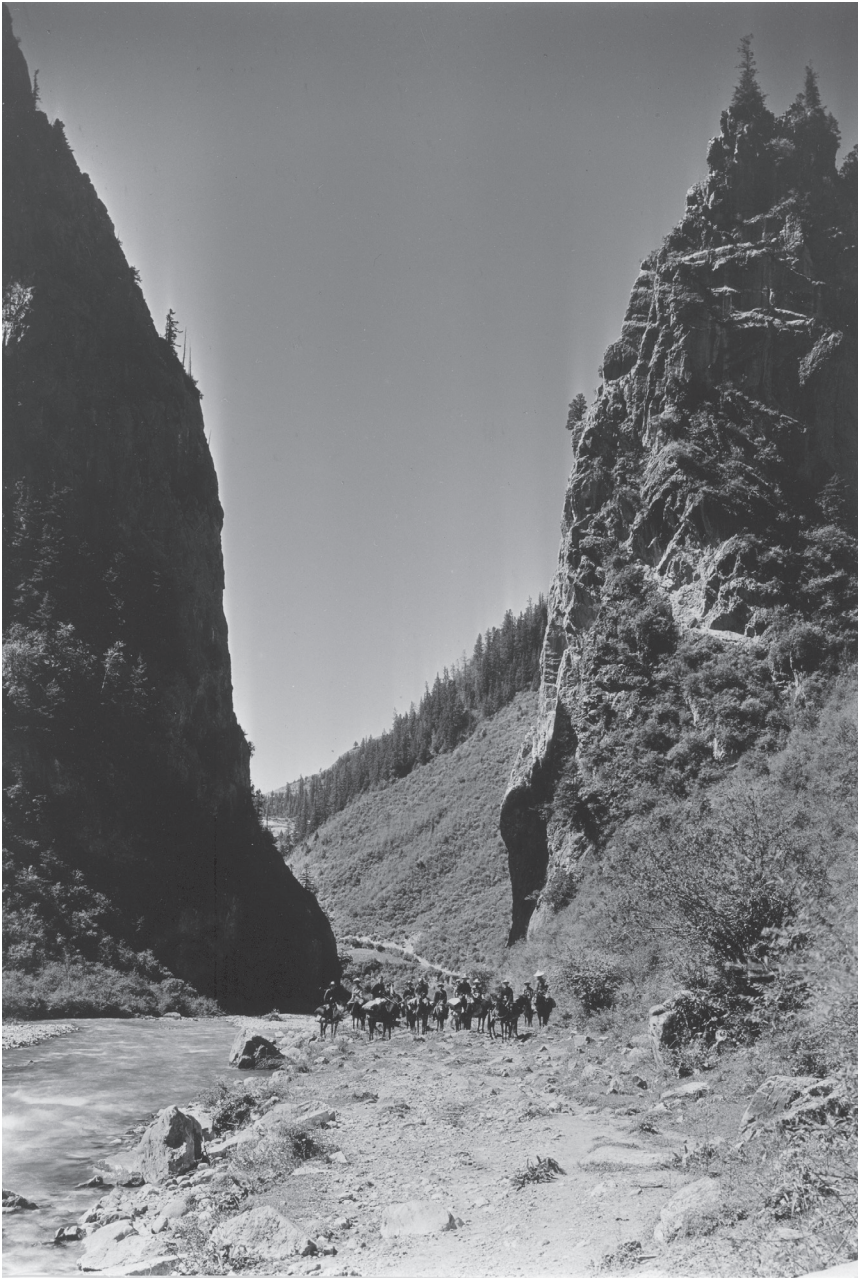




19 (p. 72)

Eastern Kan-su Min Shan; view from the summit ridge between Changolo Valley and Ch'i-pu kou (valley) looking southwest from an elevation of 12700 feet, west of A-chüeh and Ta-yü kou. The main backbone of the Min Shan in the background. The steep smooth-looking slopes to the left in valley are covered with willows and *Rhododendron capitatum*. Limestone cliffs in foreground showing vertical strata.



20 (p. 78)

A limestone gate in the valley of Yi-wa kou, near the village of Na-chia and (dGah-)khu looking south. In the background *Picea Wilsonii* Mast.