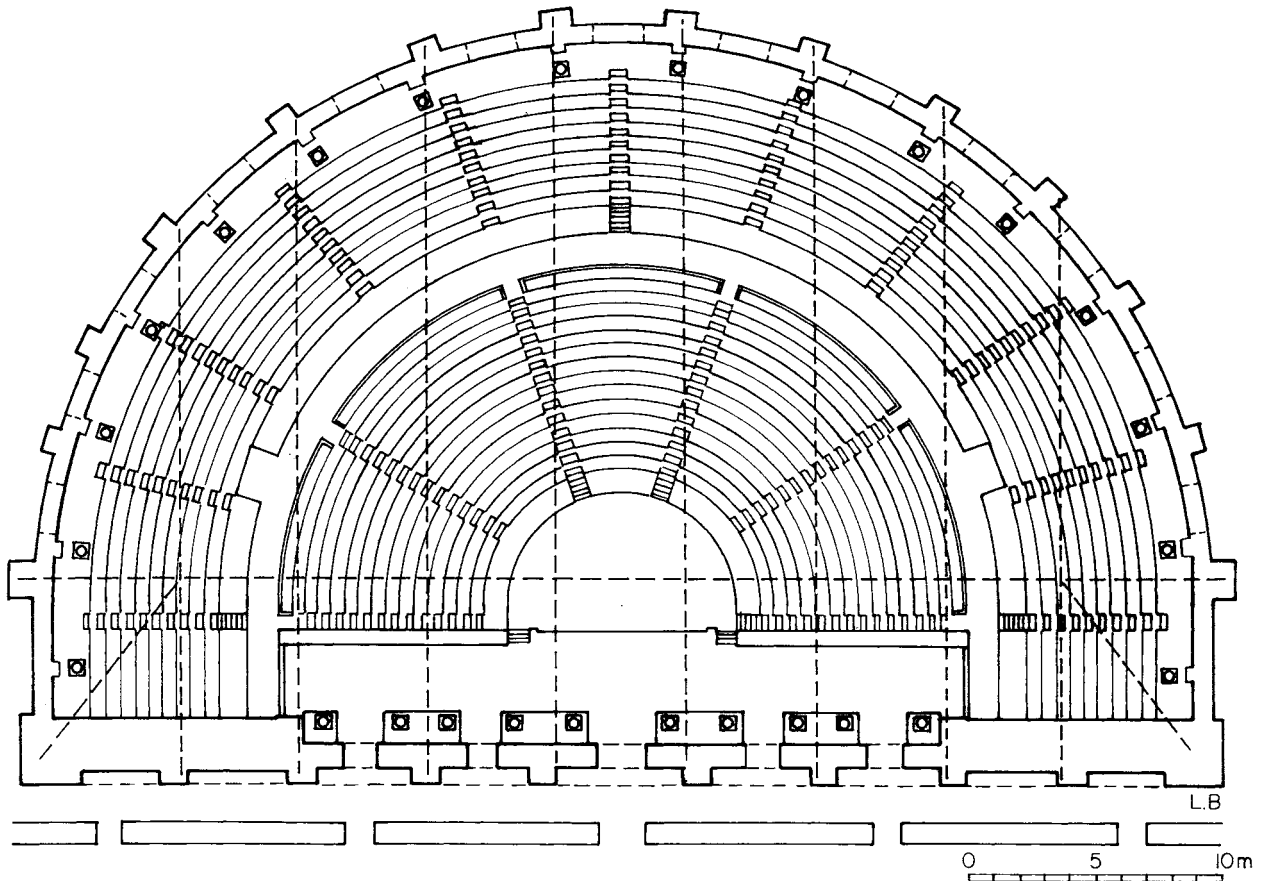


1 Molding of orchestra and *pulpitum*

2 Corridor behind scene wall looking west



3 Bouleuterion after the renovations by P. Vedius with its roofing system



1 Doorway in east *parodos* from north (SD 7)



2 Doorway in west *parodos* from north (SD 1)



3 West *parodos*, SD 1: cutting in eastern door jamb



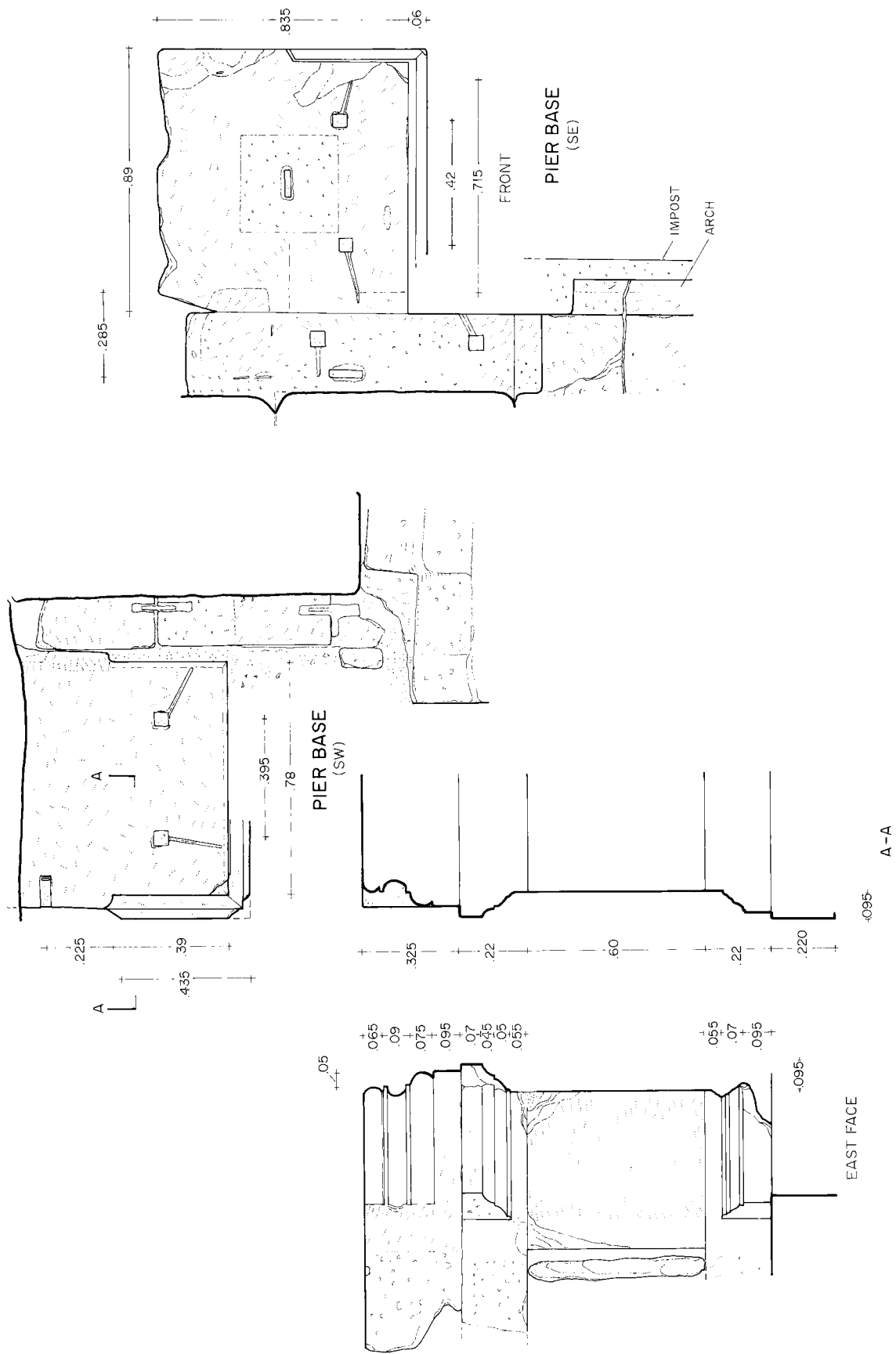
1 Arched doorway in east *parodos*



2 Pedestal and base in south-east corner



3 Pedestal and base in south-west corner



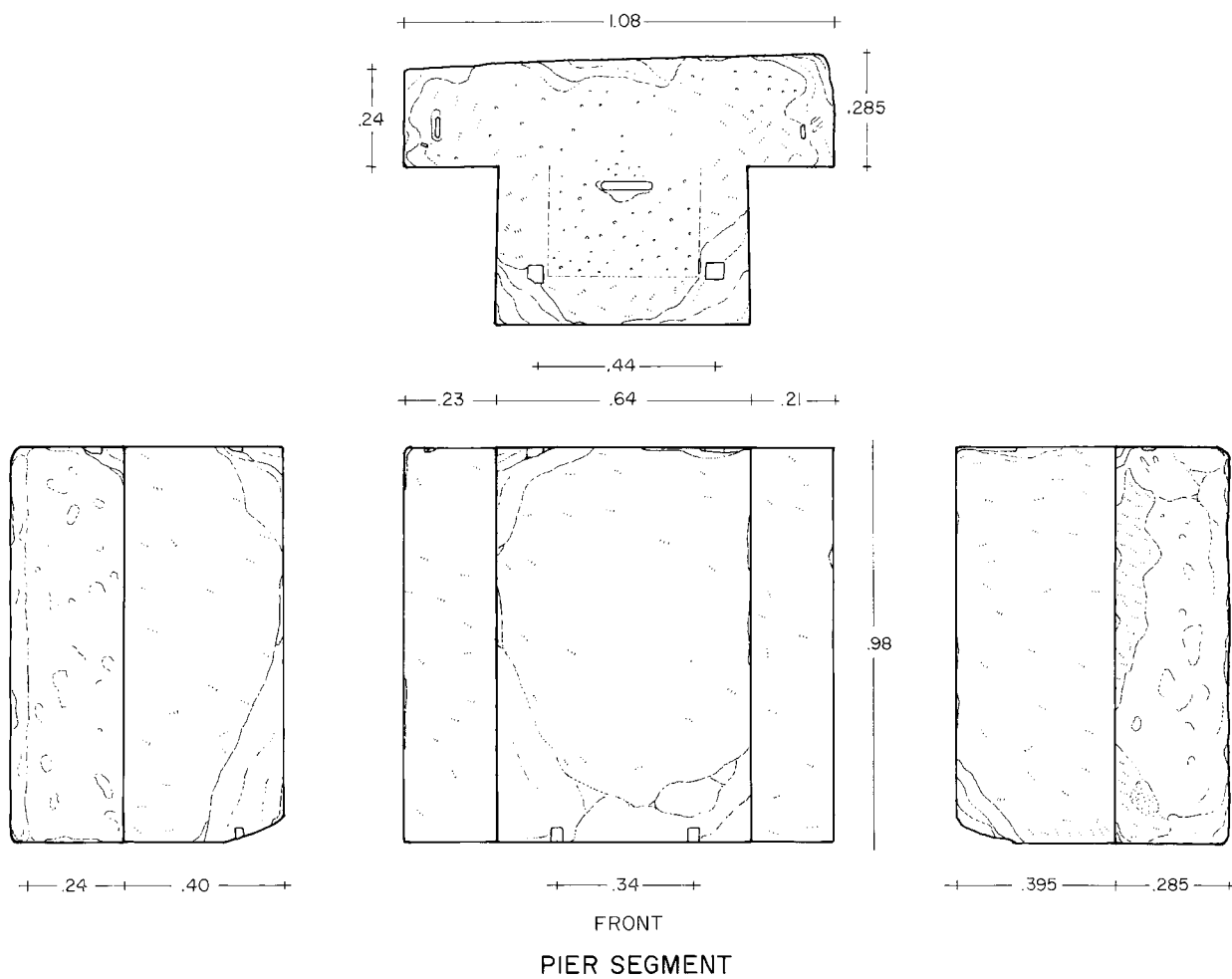
Pedestals and pilaster base in southeast and southwest corners



1 Top of western corner pilaster base



2 Top of eastern corner pilaster base



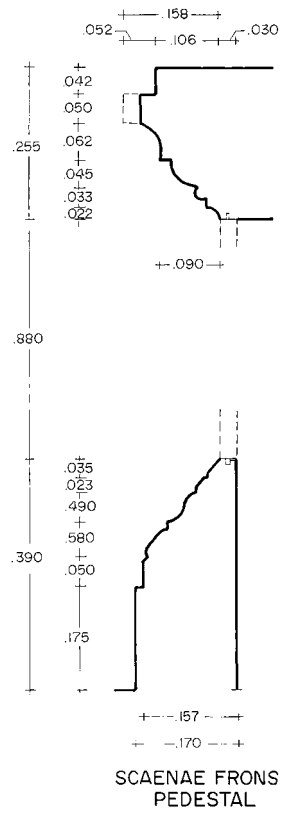
1 Part of eastern corner pilaster



2 Threshold of secondary doorway (SD 5)



1 Original doorway in scene wall (SD 6) from south with remains of original jamb capital



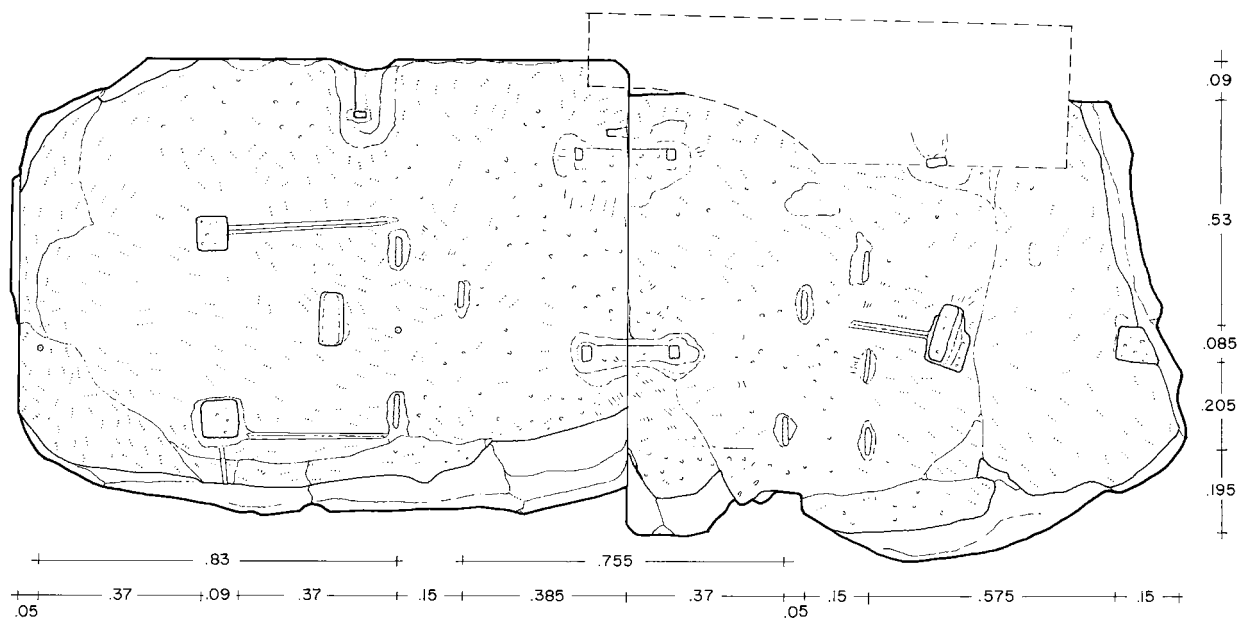
2 Pedestal molding



3 Pedestal 5



PEDESTAL 2



PEDESTAL 5

Pedestals 2 and 5



1 Pedestal 1 from north



2 Pedestal 6 from north



3 North wall of Basilica Stoa and doorway BD 2, with Bouleuterion SD 2 behind



1 Central door through Basilica Stoa (BD 3), north wall, with Bouleuterion SD 4 behind



2 Western lateral door in Basilica Stoa (BD 1), north wall, with Bouleuterion SD 1 behind



1 Corridor between
Bouleuterion and
Basilica Stoa looking
east



2 Steps of western arched doorway



1 South jamb of western arched doorway from east



2 Access to the *vomitorium* staircase from the east *parodos*



3 Access to the *vomitorium* staircase from the west *parodos*



1 Traces of plaster next to SD 1



2 Cutting for a clamp connecting pedestal 5 with the string course



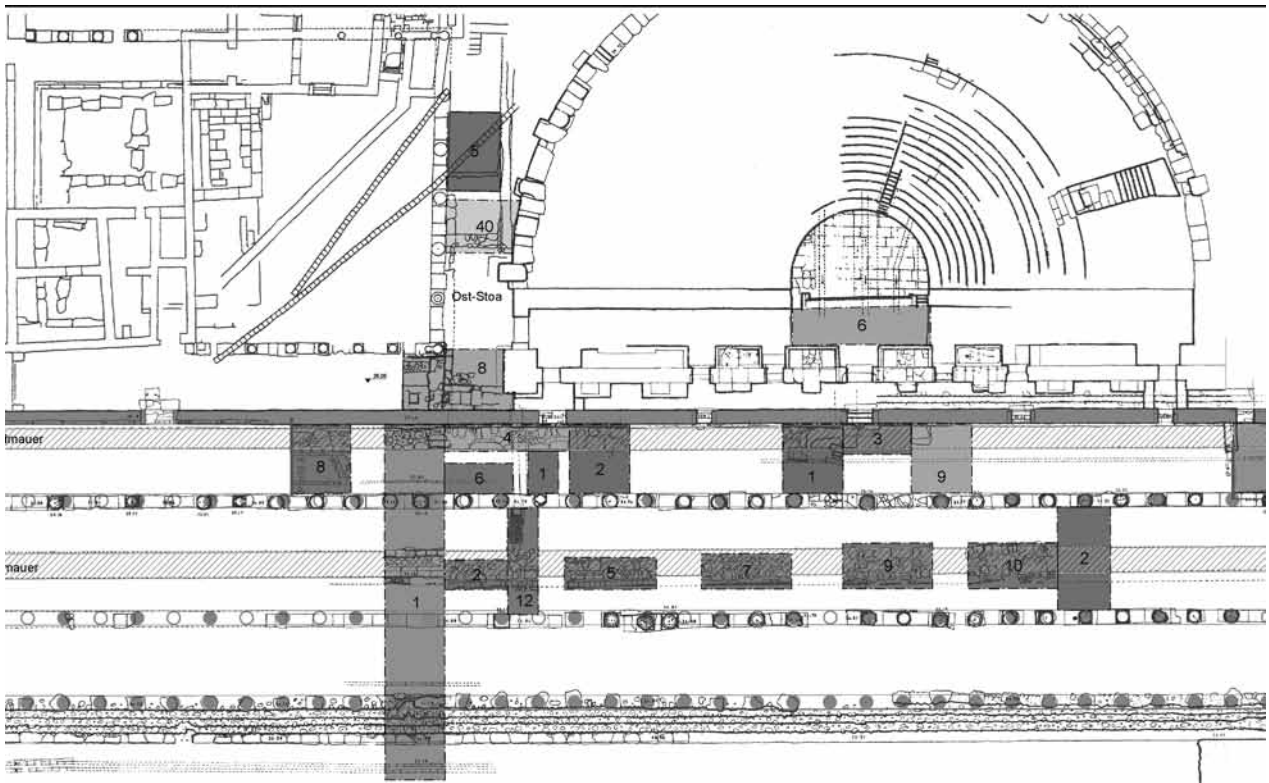
1 Short wall between west pier and Basilica Stoa



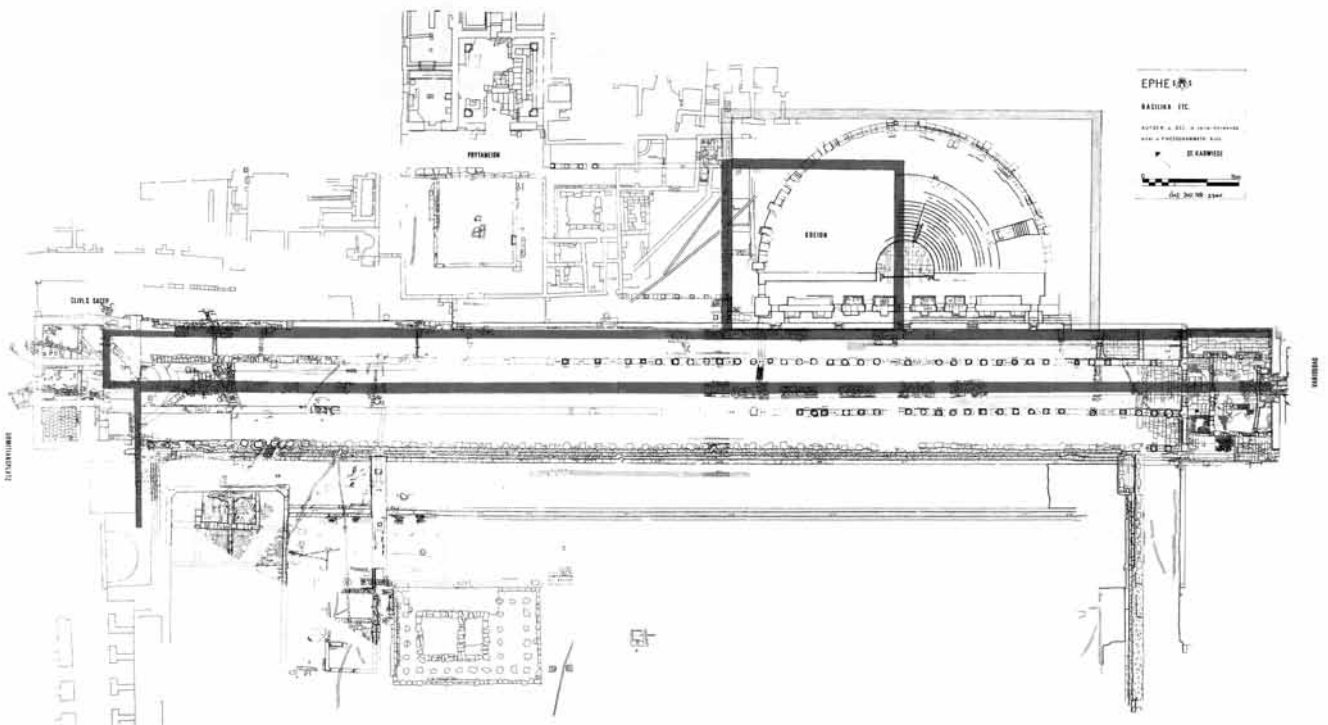
2 Brickwork on the easternmost buttress, next to SD 7



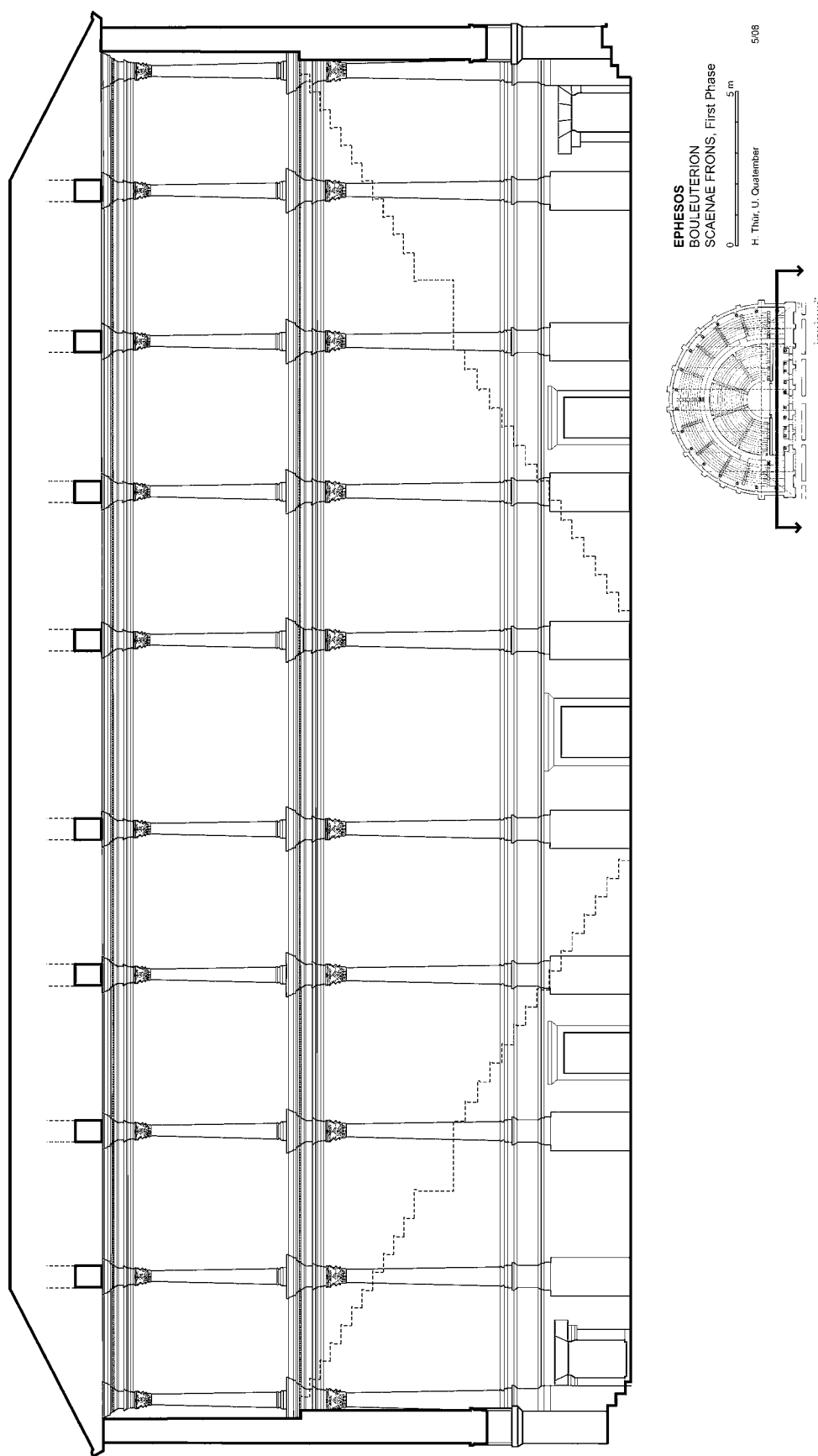
3 Vaulted door in west *parodos*



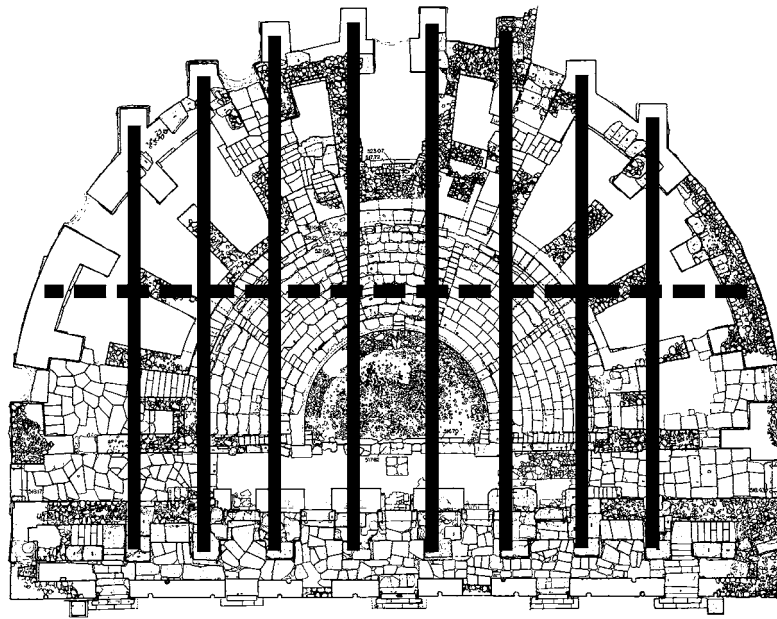
1 Trenches in the Basilica Stoa between 1963 and 1972 (detail)



2 W. Alzinger's reconstruction of a Hellenistic Bouleuterion and adjacent Stoa



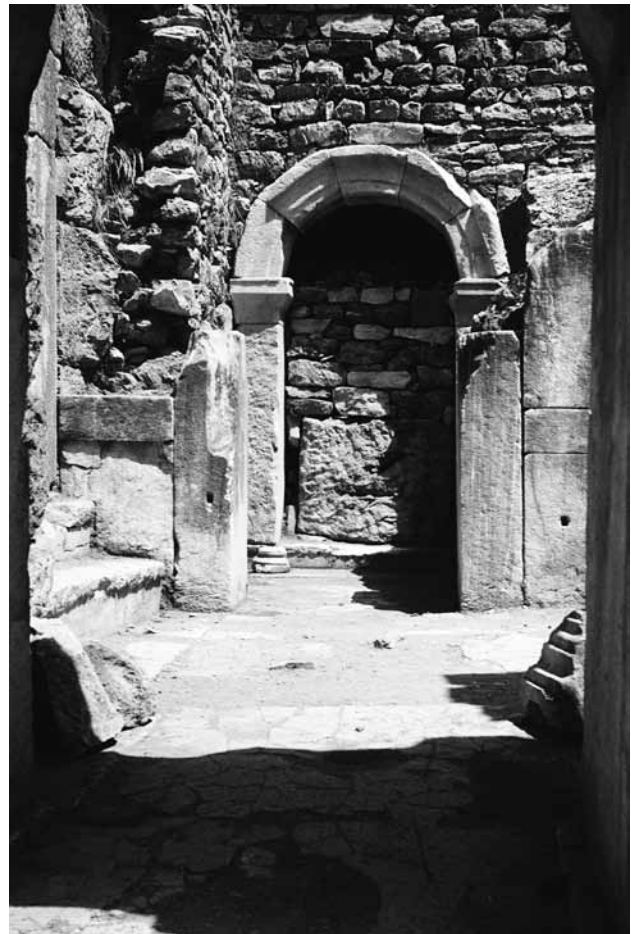
Reconstruction of the first building phase, scene wall



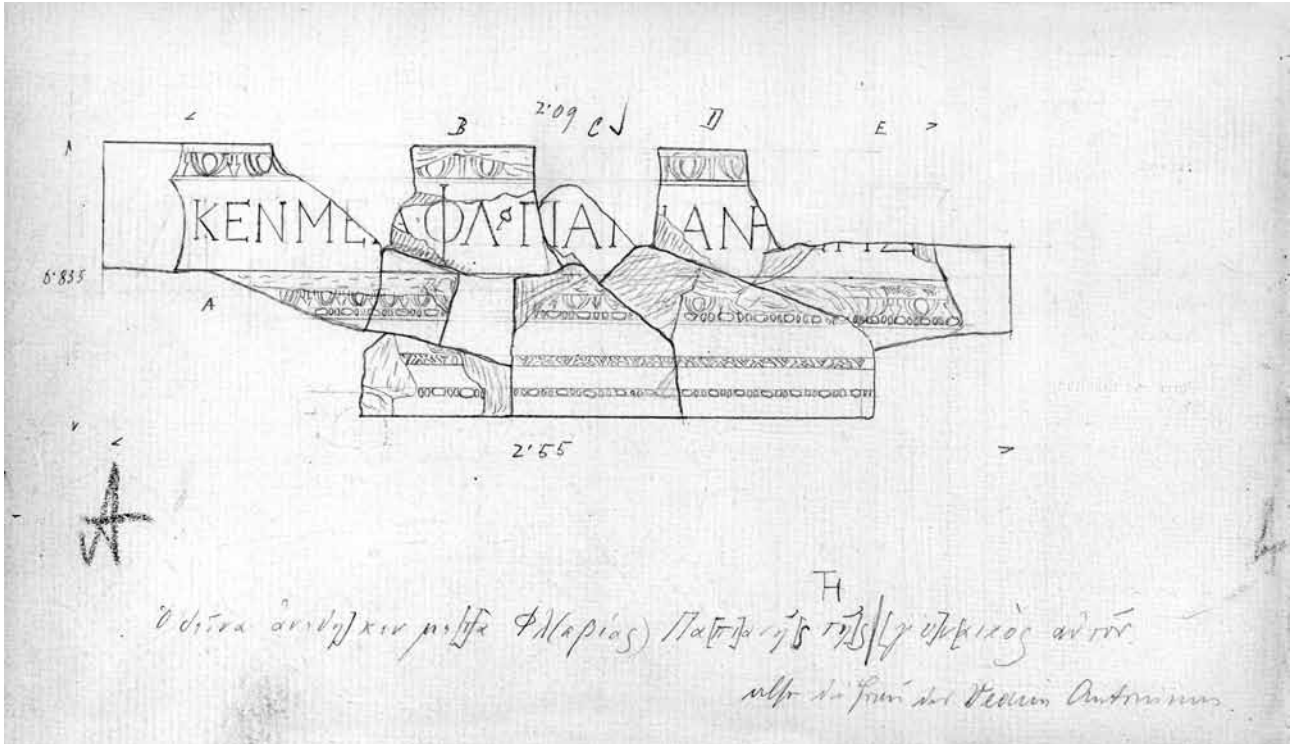
1 Reconstruction of the roofing system of the Bouleuterion in Aphrodisias (according to Meinel 1980)



2 Blockage of western doorway between Bouleuterion and Rhodian Peristyle



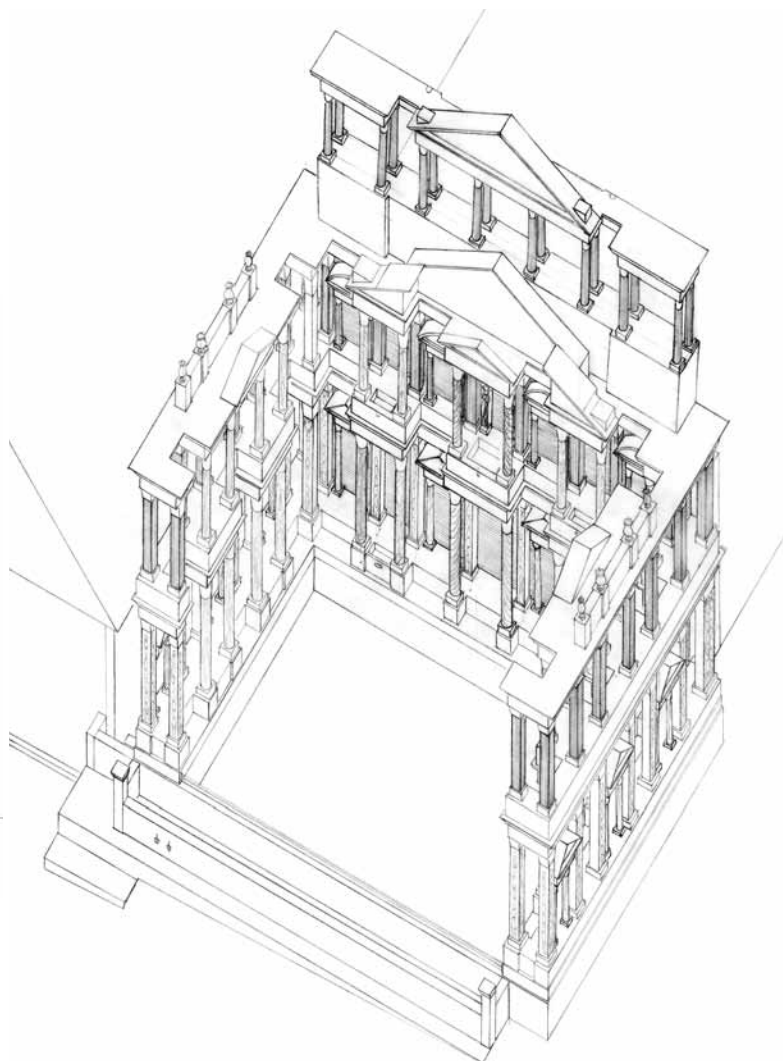
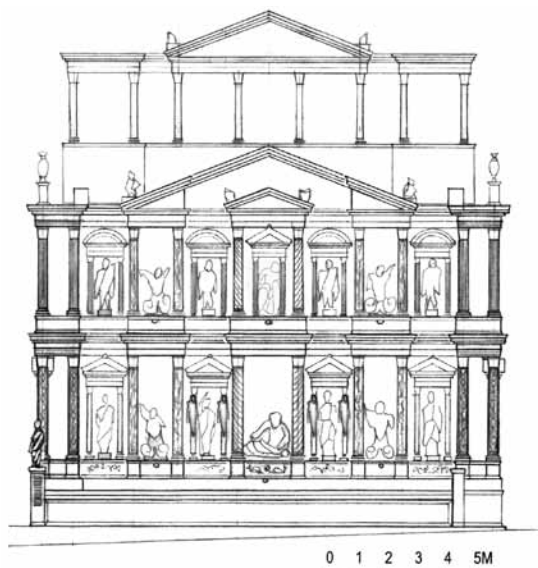
3 Blockage of doorway to west vomitorium



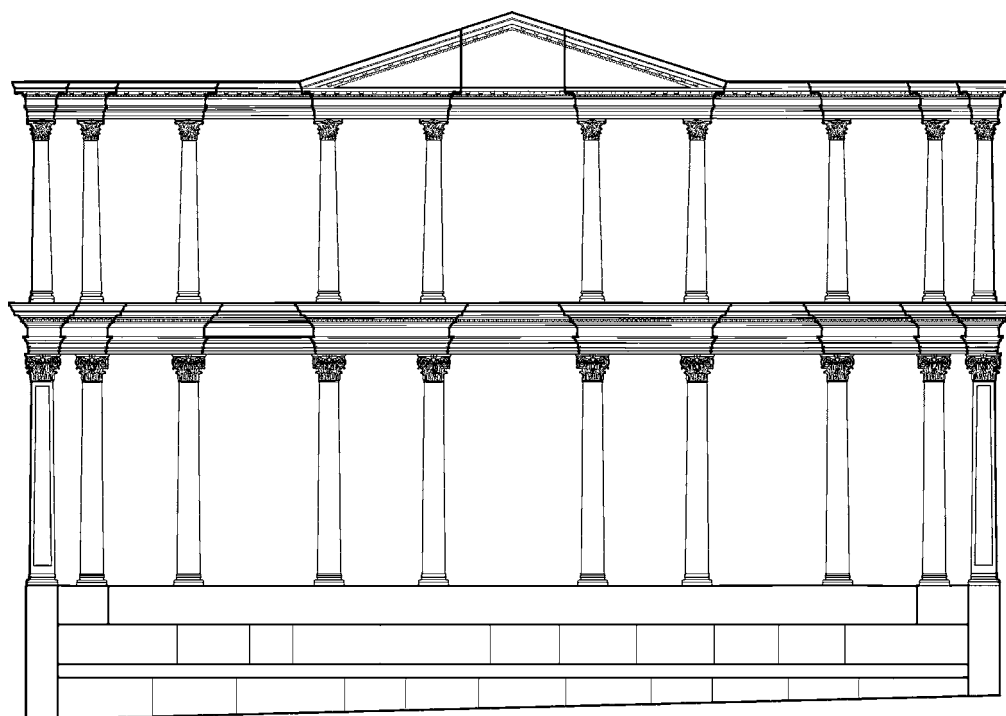
1 Skizzenbuch no. 1685, reverse



2 Skizzenbuch no. 1687



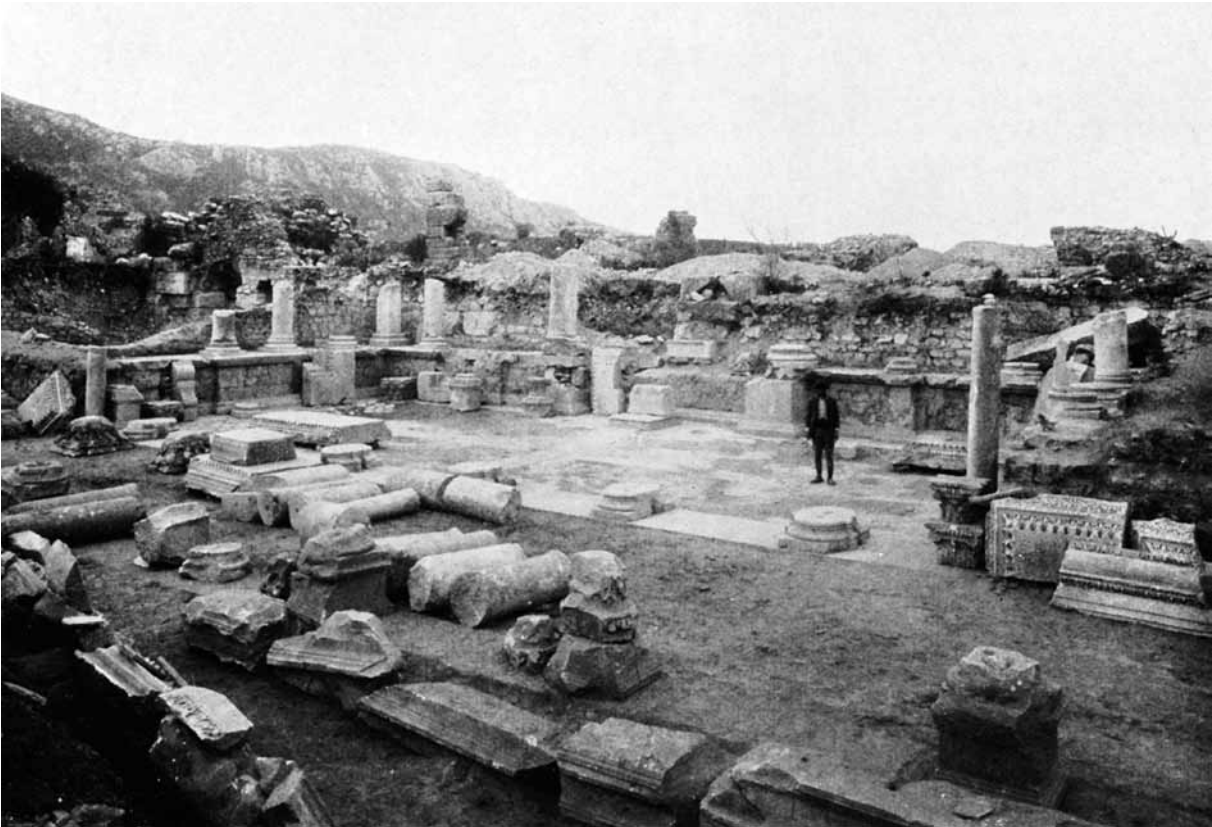
1 Ephesos, Nymphaeum of C. Laecanius Bassus (reconstruction by K. Jung)



2 Ephesos, Street Fountain on the road to the Magnesian Gate (reconstruction by U. Quatember)



1 Ephesos, Celsus Library



2 The so-called Kaisersaal in the Vedius Gymnasium (1927)



1 Entablature of the lower story in the "Kaisersaal"



2 The so-called Monopteros along the road to Magnesia during excavation in 1929



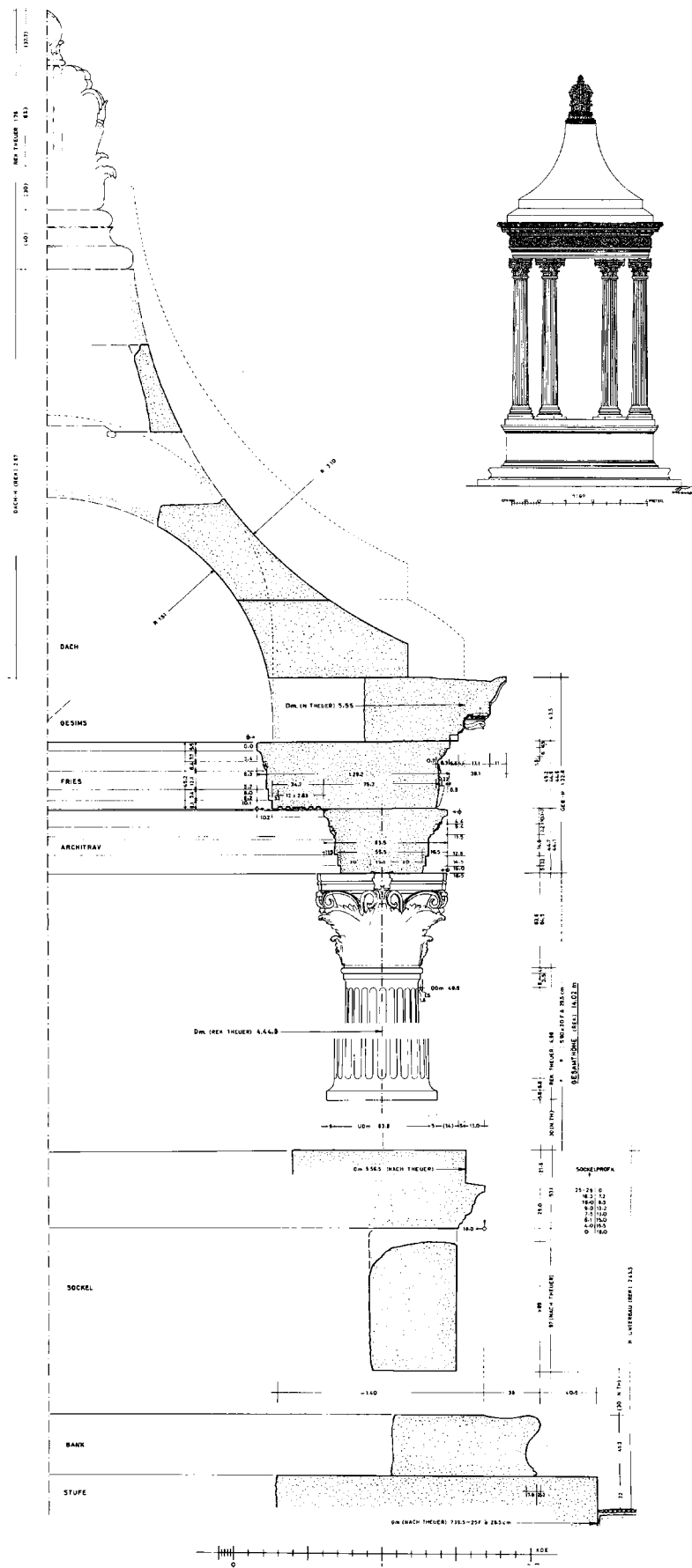
1 Entablature of the "Monopteros"



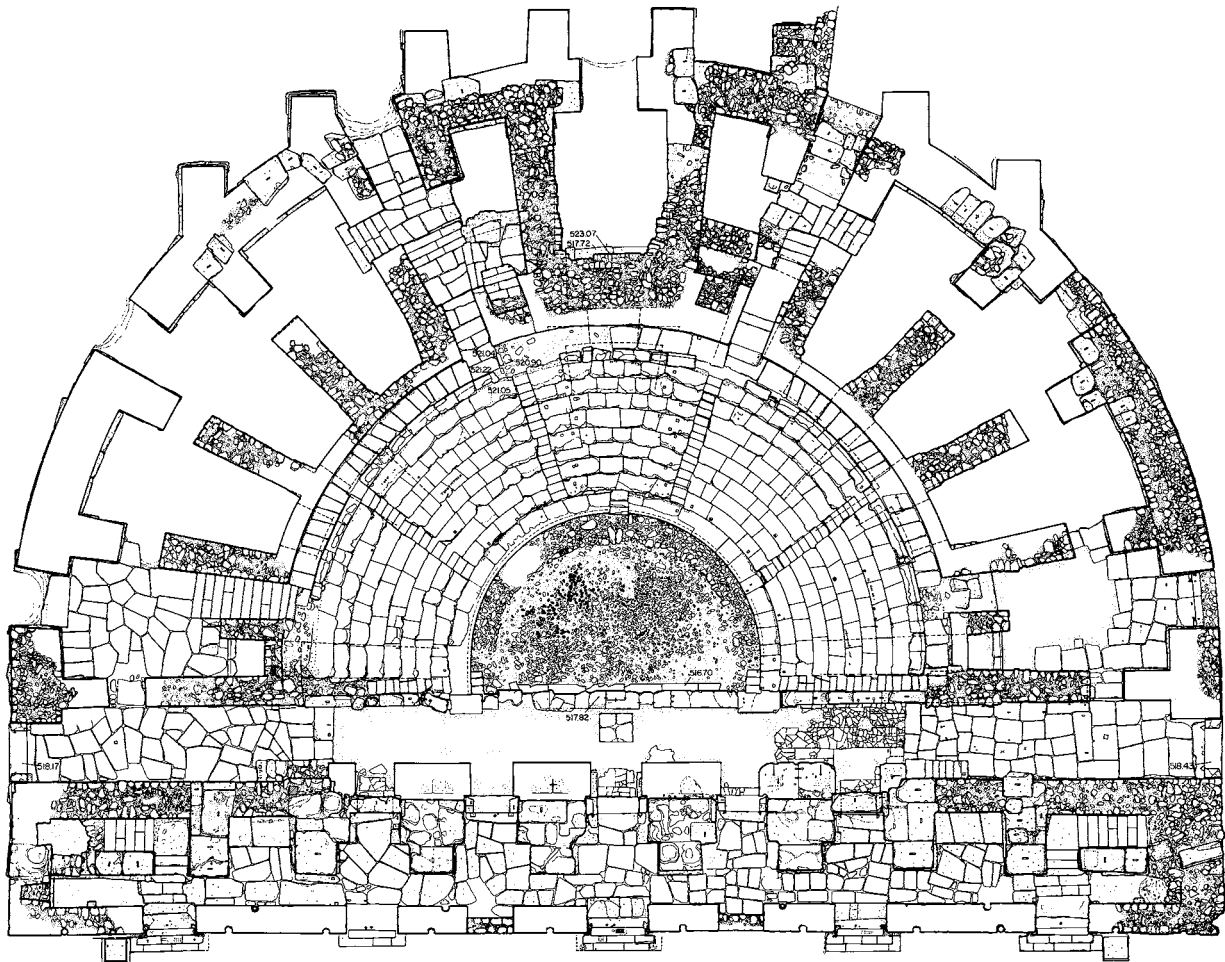
2 Capital from the "Monopteros"



3 Capital from the so-called Serapeion

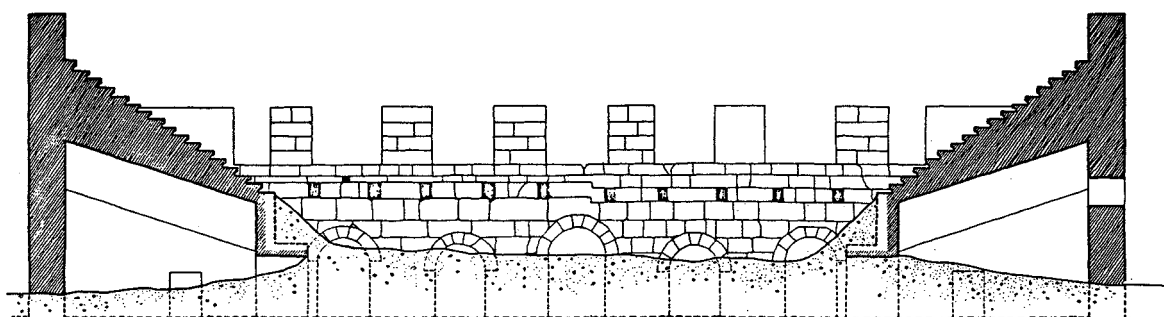
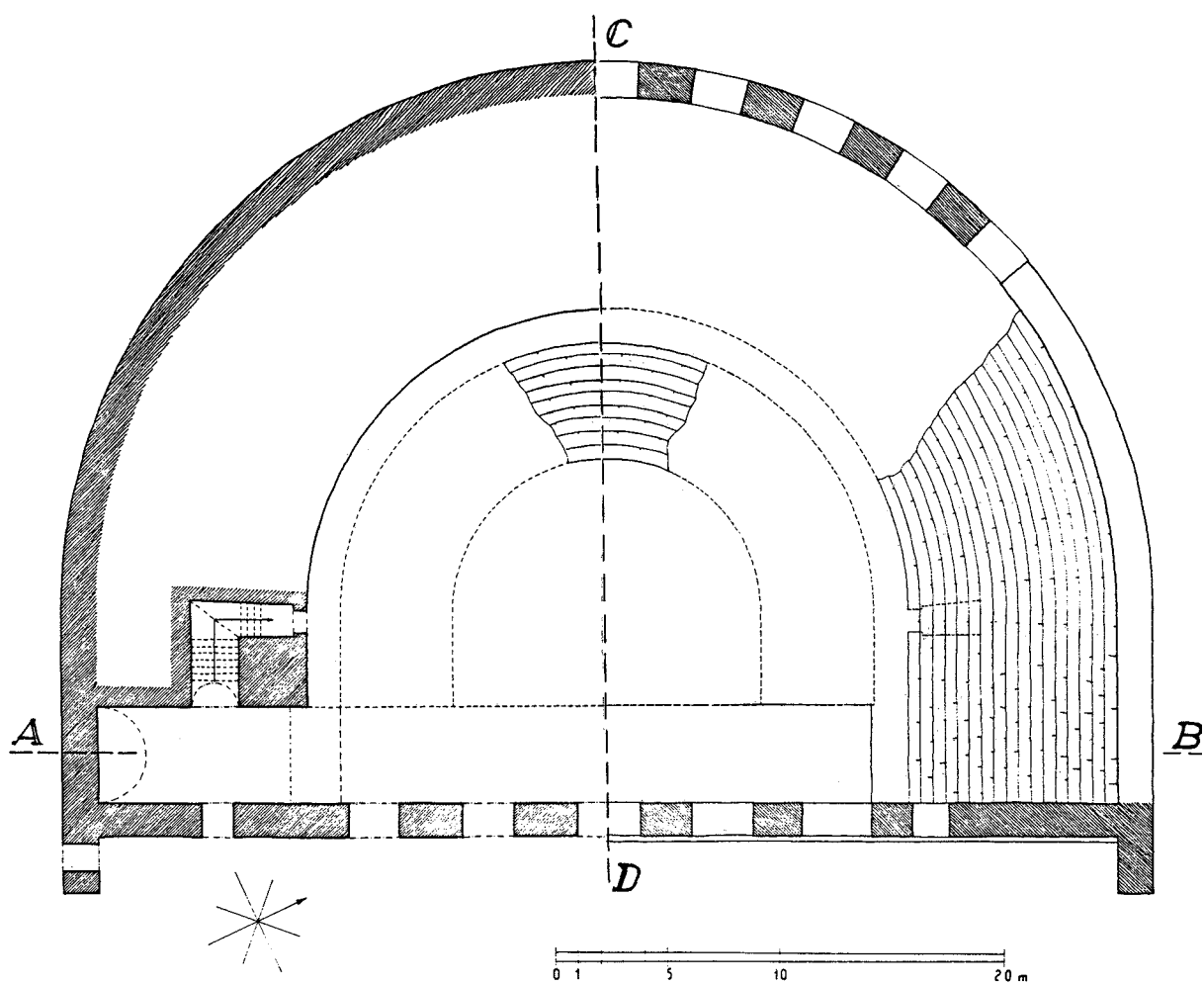


The "Monopteros" after W. Koenigs (section) and M. Theuer (reconstruction)

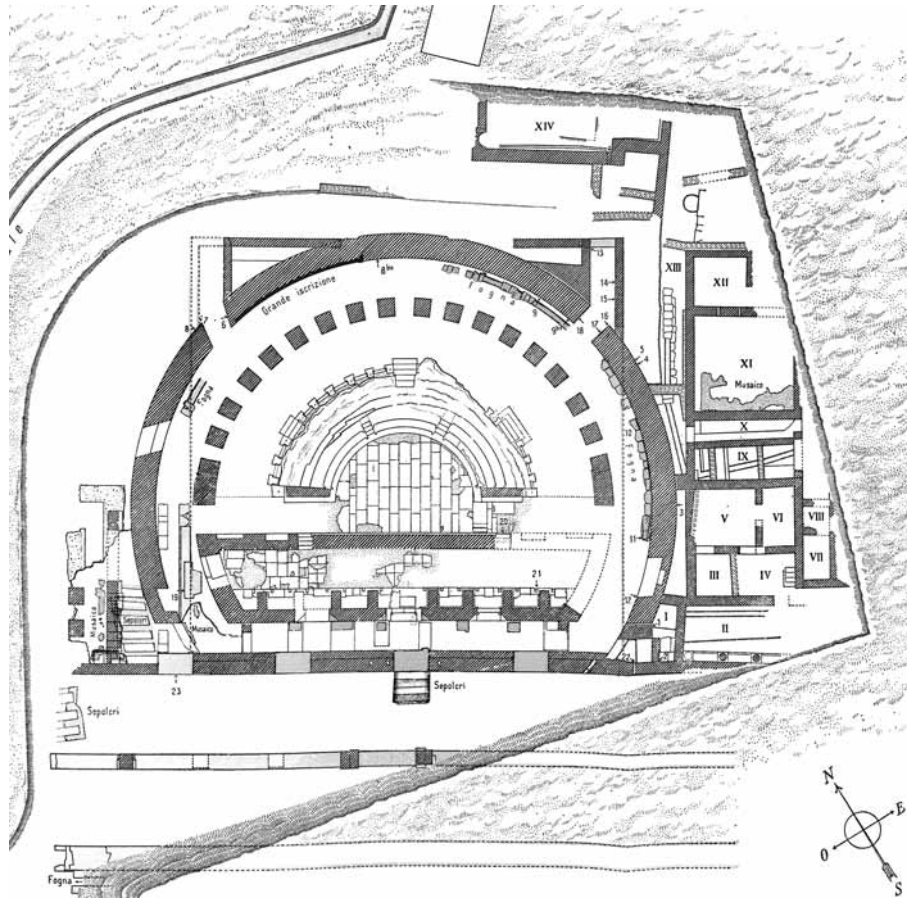


APHRODISIAS
BOUL 19
BOULEUTERION, PLAN
KEY
MORTAR, PLASTER
TILE, BRICK
TOPS OF WALLS RESTORED
DRAWN 1:50
SURVEYED AND DRAWN, L.B.E.R., 2000
REV. 1.8. 2002

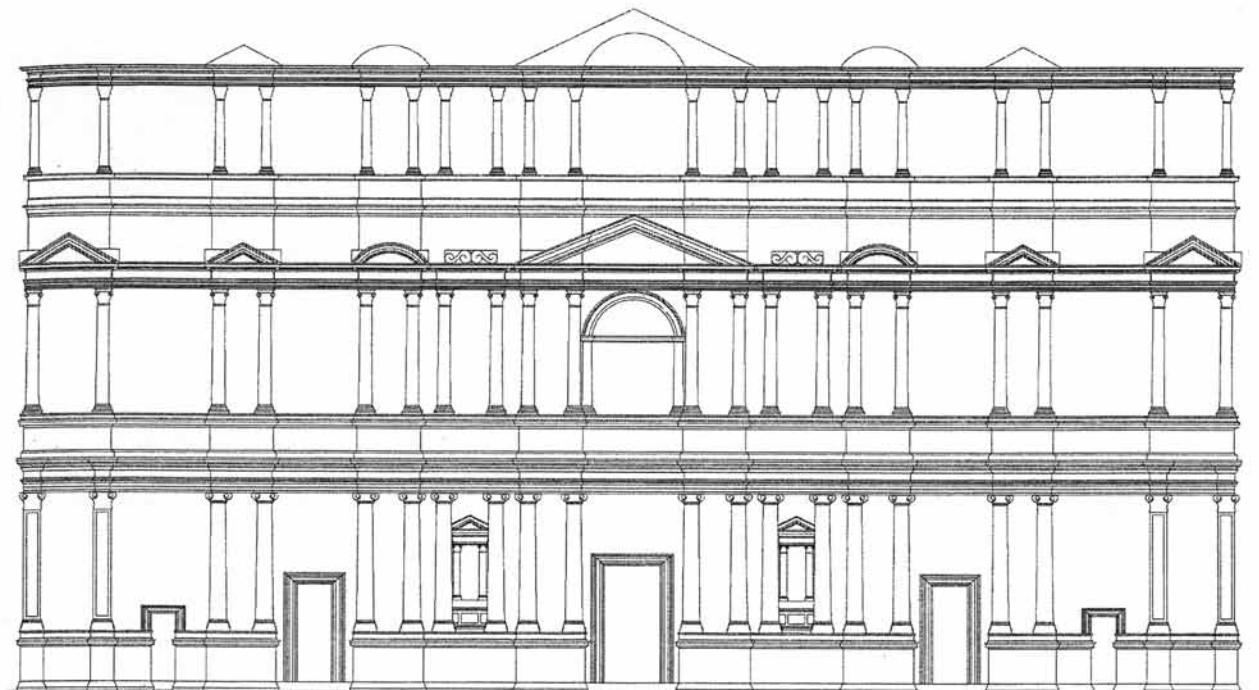
Plan of the Bouleuterion in Aphrodisias



Bouleuterion in Cibyra

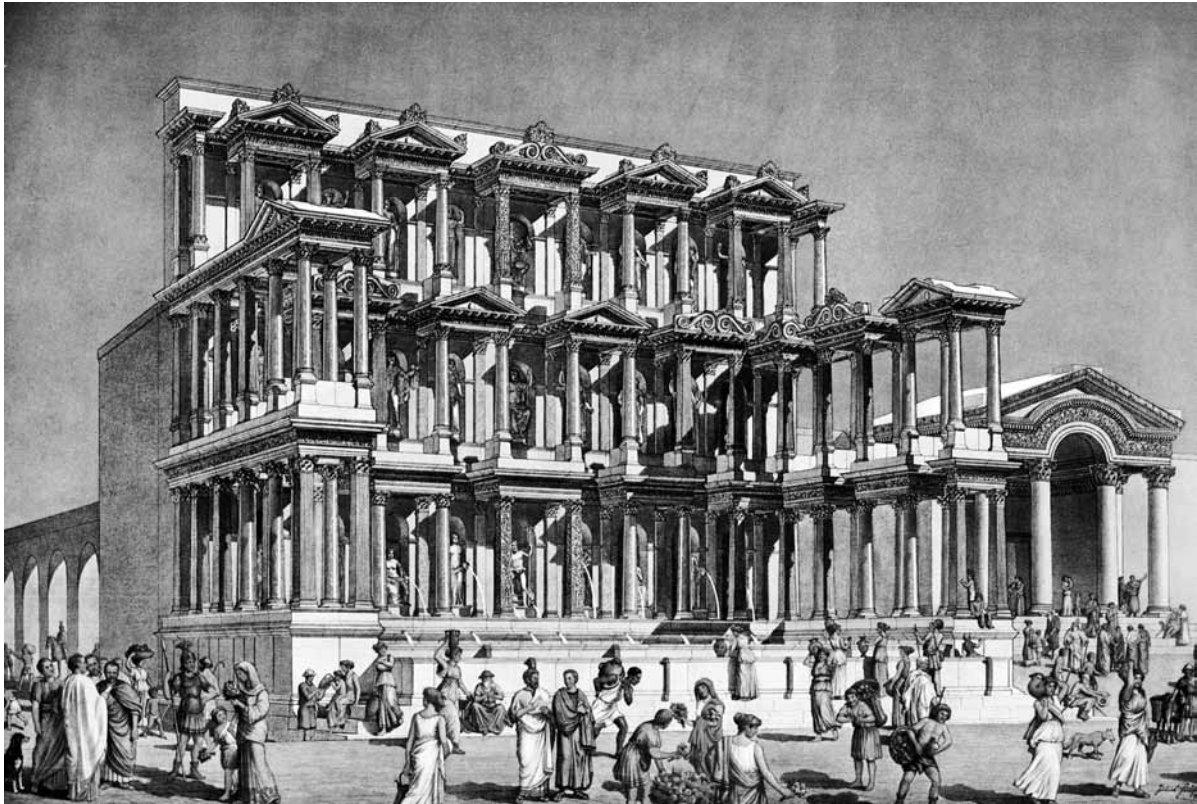


1 Odeion in Gortyn

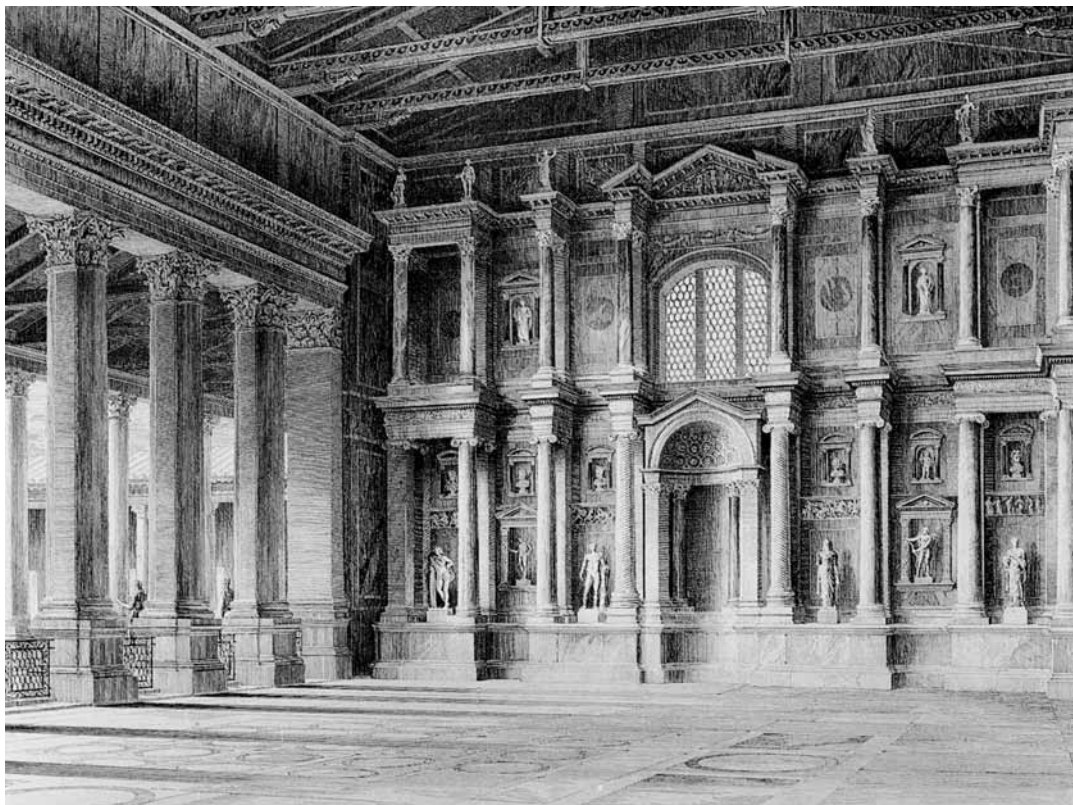


REKONSTRUKTION: Anzu Öztürk GEZEICHNET: İsmail Çöküçoğlu, Deniz Özkan

2 Ephesos, scaenae frons of the Great Theater (reconstruction by A. Öztürk)



1 Miletus, Nymphaeum (reconstruction by J. Hülsen)



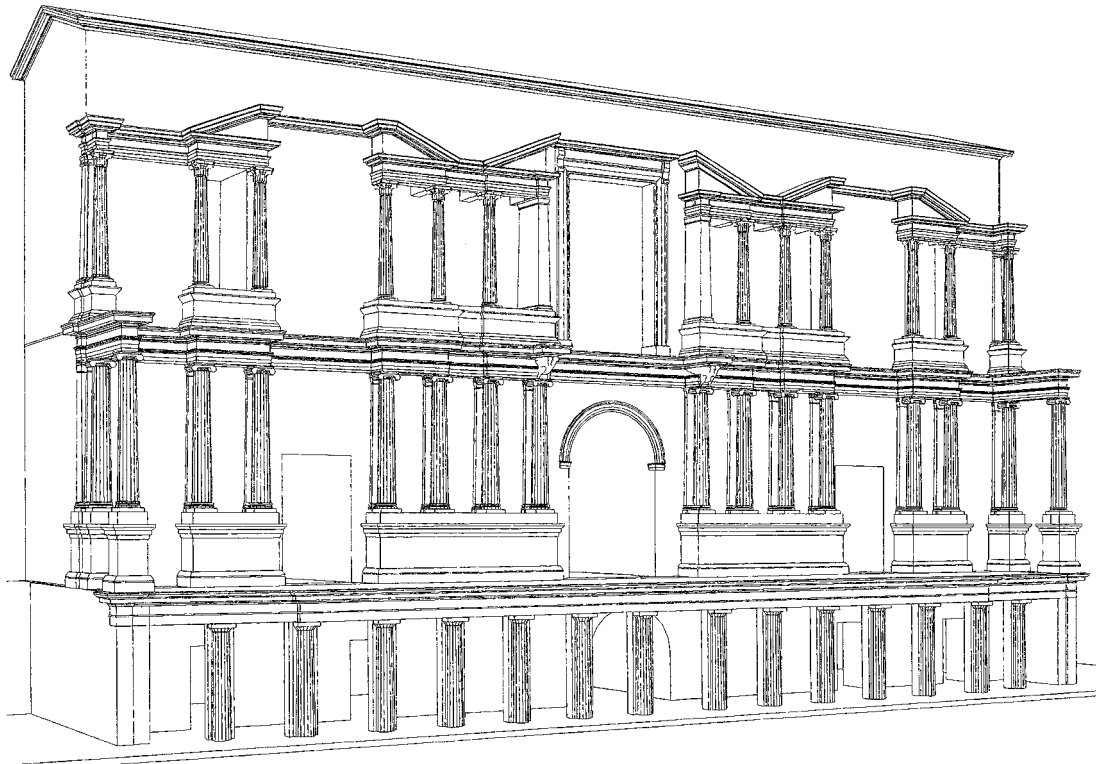
2 Ephesus, "Marmorsaal" in the Harbour Gymnasium (reconstruction by G. Niemann)



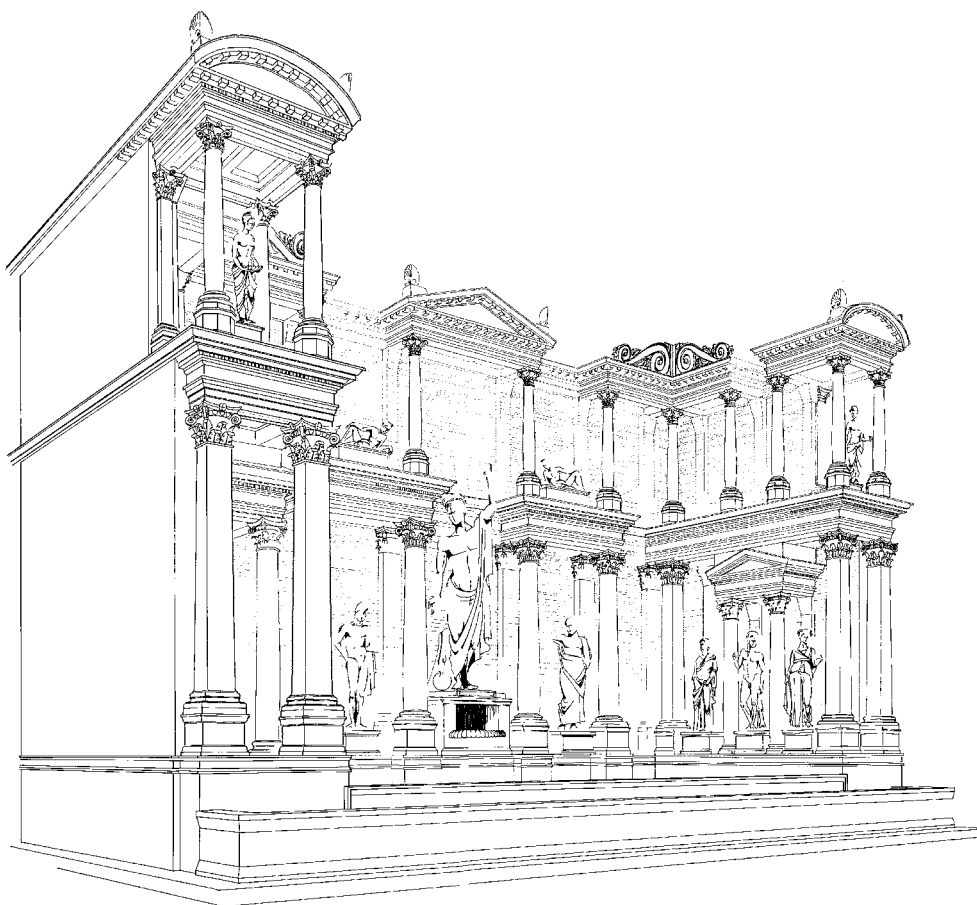
1 Masonry of the *scaenae frons* of the Great Theater in Ephesos



2 Masonry of the so-called Sockelbau



1 Aphrodisias, Great Theater (reconstruction by D. Theodorescu)



2 Ephesos, Nymphaeum Traiani (reconstruction by H. Pellionis)